

LEDSPOTS CC

ACTIVE PLUS – GEN. 2



NEW MODULAR LED SPOTS AND ENGINES FOR MULTIPLE OPTICS CONFIGURATIONS

One of the main characteristics of this LED spots and engines is their flexibility. The modularity of these LED engines allows you to combine different lenses and reflectors in order to get the result you expect.

Moreover, with its easy to fit technology you connect lenses or reflectors in a blink of an eye – just click it in.

Typical applications for LEDSpots

Integration in luminaires

- Residential lighting
- Retail lighting
- Hospitality lighting
- Museum lighting

Active Plus – Gen. 2

■ **MODULAR SYSTEM: ENGINE + OPTICS**

■ **NARROW COLOUR TOLERANCES:
2 STEP MACADAM (S124)**

■ **COLOUR RENDERING INDEX:
CRI 80 AND CRI 95**

■ **LUMINOUS FLUX: UP TO 1750 LM**

■ **MADE IN ITALY**



LED Engines for Active PLUS and Evolve 50

LEDSpot engine equipped with LED module, holder, thermal pad, heat sink and leads but without reflector or lenses

Technical notes

For reflectors PLUS and lens Evolve

Optics fixation: click-in

Heat sink material: aluminium

Lumen maintenance:

L90/B10 (S124) or L90/B20 (7.2/9.2);

50,000 hrs. at max. allowed operation current and

75 °C at t_p point

Temperature depends on installation situation and has to be checked by the luminaire manufacturer.

Colour accuracy initially: 2 SDCM (S124);

3 SDCM (7.2/9.2)

Leads: Cu tinned, stranded conductors 0.5 mm²,

length: 200 mm, stripped lead ends (with plug on request)

With integrated cord grip

Packaging unit: see page 11



LEDSpot Engine S124



LEDSpot Engine 7.2 & 9.2



LEDSpot Engine HALO

Maximum ratings

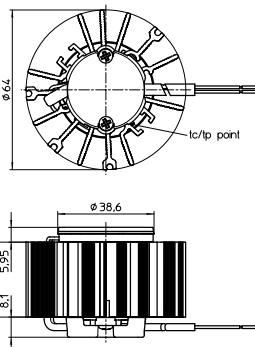
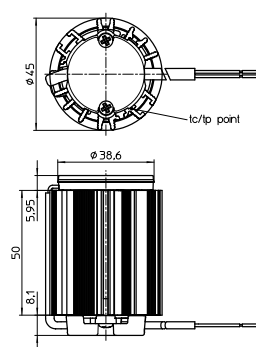
Exceeding the maximum ratings can lead to reduction of service life or destruction of the modules.

Type	Ambient temperature range (t_a)		Operation temp. at t_c point with max. current		Storage temperature range		Max. allowed repetitive peak current mA
	°C min.	°C max.	°C min.	°C max.	°C min.	°C max.	
S124	-20	+45	-25	+90	-40	+90	800
7.2/9.2	-20	+45	-25	+90	-40	+90	1000

Temperatures depend on installation situation and has to be checked by the luminaire manufacturer.

A – Engine S124

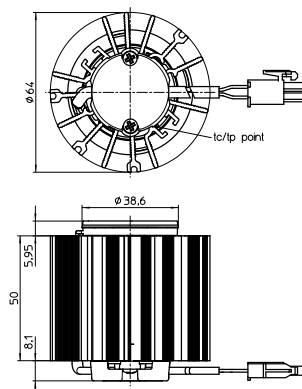
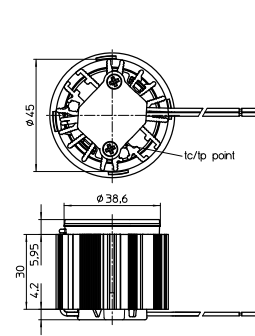
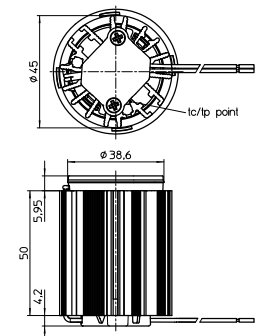
B – Engine S124



C – Engine 9.2

D – Engine 7.2

E – Engine Halo



The values contained in this data sheet can change due to technical innovations. Any such changes will be made without separate notification.

LED Engines for Active PLUS and Evolve 50

Electrical characteristics

Type	50 mA		250 mA		300 mA		350 mA		500 mA	
	P _{el} (W)	V _f (V)	P _{el} (W)	V _f (V)	P _{el} (W)	V _f (V)	P _{el} (W)	V _f (V)	P _{el} (W)	V _f (V)
Engine S124	—	—	8.3	33.4	10.2	33.8	12.0	34.3	—	—
Engine 9.2	—	—	4.1	16.5	5.0	16.7	6.1	17.3	8.9	17.85
Engine 7.2	—	—	4.1	16.5	5.0	16.7	6.1	17.3	—	—
Engine Halo	1.6	31.4	—	—	—	—	12.9	37	—	—

Voltage and power tolerance: ± 10%

Optical characteristics

at t_p 70 °C

Type	Ref. No.	Colour	Correlated colour temperature K	Typ. luminous flux and efficiency at				CRI	Energy efficiency at max. current
				250 mA		300 mA			
				lm	lm/W	lm	lm/W	R _a	

LEDSpot Engine S124 up to 300 mA – Drawing A

Engine S124W@300mA	569135	warm white	2700	1105	144	1410	138	82	A++
Engine S124W@300mA	569136	warm white	3000	1035	125	1215	119	95	A++
Engine S124W@300mA	569137	neutral white	4000	1135	137	1330	130	95	A++

Production tolerance of luminous flux and efficiency: ± 10%

Type	Ref. No.	Colour	Correlated colour temperature K	Typ. luminous flux and efficiency at						CRI R _a	Energy efficiency at max. current
				250 mA		300 mA		350 mA			
				lm	lm/W	lm	lm/W	lm	lm/W		

LEDSpot Engine S124 up to 350 mA – Drawing B

Engine S124W@350mA	569138	warm white	2700	1195	144	1410	138	1615	135	82	A++
Engine S124W@350mA	569139	warm white	3000	1035	125	1215	119	1395	116	95	A++
Engine S124W@350mA	569140	neutral white	4000	1135	137	1330	130	1520	127	95	A++

Production tolerance of luminous flux and efficiency: ± 10%

Type	Ref. No.	Colour	Correlated colour temperature K	Typ. luminous flux and efficiency at				CRI R _a	Energy efficiency at max. current
				350 mA		500 mA			
				lm	lm/W	lm	lm/W		

LEDSpot Engine 9.2 – Drawing C

Engine 9.2 500mA	567038	warm white	2700	775	127	1070	120	80	A++
Engine 9.2 500mA	567040	warm white	3000	805	132	1120	126	80	A++
Engine 9.2 500mA	567041	neutral white	4000	835	137	1160	130	80	A++

LEDSpot Engine 7.2 – Drawing D

Engine 7.2 350mA	567032	warm white	2700	775	127	—	—	80	A++
Engine 7.2 350mA	567033	warm white	3000	805	132	—	—	80	A++
Engine 7.2 350mA	567034	neutral white	4000	835	137	—	—	80	A++

Production tolerance of luminous flux and efficiency: ± 10%

Type	Ref. No.		Colour	Correlated colour temperature K	Typ. luminous flux and colour temperature at				CRI	Energy efficiency at max. current
	without connector	with connector			50 mA		350 mA			
					lm	K	lm	K	R _a	

LEDSpot Engine Halo – Drawing E

Engine Halo 350mA	569772	569773	warm white	3000 → 2000	130	2000	1200	3000	90	A+
-------------------	---------------	---------------	------------	-------------	-----	------	------	------	----	----

Production tolerance of luminous flux and efficiency: ± 10%

The values contained in this data sheet can change due to technical innovations. Any such changes will be made without separate notification.

Reflectors PLUS for LED Engines

Technical notes

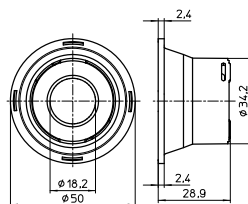
For click-in fixation on holders Easy

Diameter: 50 mm

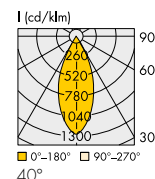
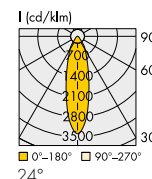
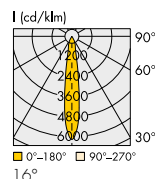
Material: PC

Operating temperature: -25 to 90 °C

Storage temperature: -40 to 90 °C



Ref. No.	For LED modules	Beam angle [°]	Cover	Optical efficiency [%]	Weight g
603685	S124, 9.2, 7.2	16	Clear	87	10
603687	S124, 9.2, 7.2	24	Clear	86	10
604919	S124, 9.2, 7.2	40	Clear	87	10
603686	S124, 9.2, 7.2, Halo	10	Frost	86	10
603688	S124, 9.2, 7.2, Halo	26	Frost	85	10
604920	S124, 9.2, 7.2, Halo	42	Frost	85	10



Optics Evolve 50 for LED Engines

Technical notes

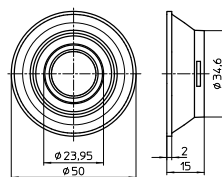
For click-in fixation on holders Easy

Diameter: 50 mm

Material: PC

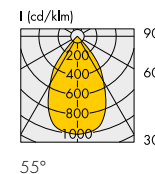
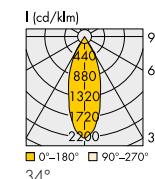
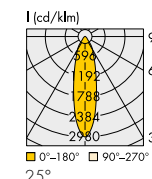
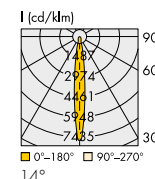
Operating temperature: -25 to 90 °C

Storage temperature: -40 to 90 °C



Ref. No.	For LED modules	Beam angle [°]	Cover	Optical efficiency [%]	Weight g
603672	S124, 9.2, 7.2, Halo*	14	—	87	15
603673	S124, 9.2, 7.2, Halo*	25	—	86	15
603674	S124, 9.2, 7.2, Halo*	34	—	89	15
604879	S124, 9.2, 7.2, Halo*	55	—	86	15

* In addition with mixing chamber

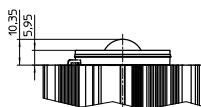


*Mixing Chamber for Halo

Material: PC

Fixation: click-in

Ref. No.: 604024

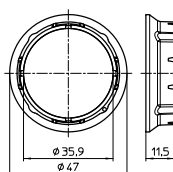


Flange Evolve

To reduce light leakage (optional)

Material: PBT, black

Ref. No.: 603681



The values contained in this data sheet can change due to technical innovations. Any such changes will be made without separate notification.