

JADEMAR LIGHTING

PFL HIGH WATTAGE FLOODLIGHT SERIES

Product Description

The Jademar PFL Series Floodlight is designed for maximum adaptability in a vast range of commercial and industrial applications and rugged service environments.

The PFL series integrates into any indoor or outdoor application with multiple mounting options, optics and 100-277VAC or 387-480VAC.

Standard features include 0-10VDC dimming and 6kV surge suppression. The IP65 housing features epoxy powder coat finish, and a polycarbonate lens cover with an integrated heat sink design that allows for safe operation up to 130F. The PFL series housing and mounting system is wind tested to EN60598-2-3 standards.

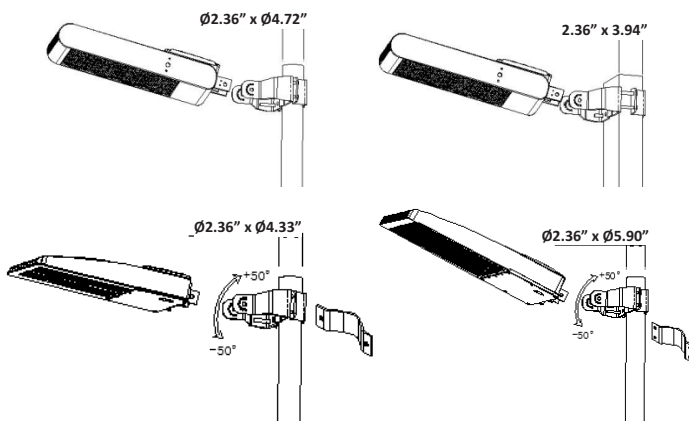
Certifications



Lifetime Based on TM21

	PFL-80W	PFL-100W	PFL-150W	PFL-230W	PFL-300W	PFL-400W
L70 @	>126,000	>189,000	>155,000	>155,000	>189,000	>155,000
L80 @	>81,000	>86,000	>94,000	>95,000	>118,000	>106,000
L90 @	>41,000	>56,000	>46,000	>46,000	>56,000	>46,000

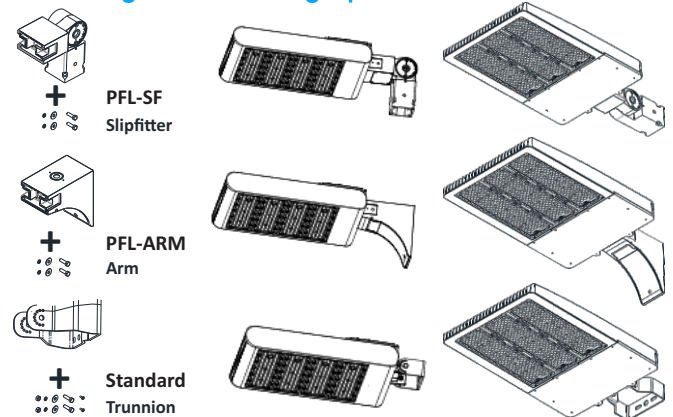
Mounting Options



Performance Summary

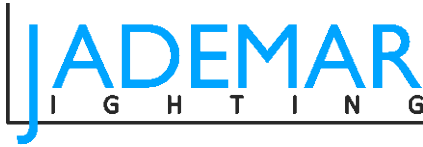
Input Power	80W / 100W / 150W / 230W / 300W / 400W
Efficacy	up to 135 Lms/W on average
CCT Options	3000K / 4000K / 5000K / 5700K
Construction	Powder Coat Cast Aluminum Body / UV Stable Polycarbonate Lens
Input Voltage	100-277VAC or 387-480VAC
Control	0-10VDC Dimming / Knockout for Dusk-to-Dawn Photo Sensor
Ingress Protection	IP65
Mounting	Interchangeable Mounting Options (shown below)
Compliance	UL / cUL
Warranty	5 Year Limited

Interchangeable Mounting Options



Information contained herein is subject to change without notice.
Values are nominal. All values conform to DLC tolerances.
Revised 10/2020





SPECIFICATION SUBMITTAL DETAIL

Project Name/Type:		Date:
Catalog/Part #:		

PFL HIGH WATTAGE FLOODLIGHT SERIES

Ordering Information / Example: **PFL-150W-H-40K-T3-TR-BZ**

Product Series	Wattage	Input Voltage	CCT	CRI	Lighting Distribution	Controls & Dimming	MOUNTING OPTIONS	Finish
PFL	80W 100W 150W 230W 300W 400W	Blank (120-277V) Standard	30K (3000k) 40K (4000K) 50K (5000K)	Blank (80 CRI) Standard	T3 (Type III) T4 (Type IV) T5 (Type V)	D (0-10V Dim) Standard PCR (Photocell Receptacle)	TR (Trunnion) Standard SF (Slip fitter) ARM (Arm Mount)	BZ (Bronze) Standard WH (White) * *Special Order
		H (347-480VAC)* (150,230,300w only) * Special order						

Field Installed Options

PFL-ARM	Mounting Arm for Wall or Post Mount for 100W, 150W, 230W, 300W, 400W Models	PFL-S150	House side shield 100W and 150W (Back/front/left/right)
PFL-SF	Slip Fitter Mount for 100W, 150W, 230W, 300W, 400W Models	PFL-S230	House side shield 230W (Back/front/left/right)
PFL-SF-ADP	Adaptor for PFL-SF Slip fitter	PFL-S300	House side shield 300W (Back/front/left/right)
PC3	3-Pin Photocell		

Lumen Performance Data

Product Number	CCT	IES Type 1			IES Type 2			IES Type 3			IES Type 4		
		Lumens	Efficacy	Wattage	Lumens	Efficacy	Wattage	Lumens	Efficacy	Wattage	Lumens	Efficacy	Wattage
PFL-80W	4000K	10,931	141.0	77.6	10,744	139.0	77.3	10,805	139.3	77.6	10,777	138.9	77.6
	5000K	11,360	146.7	77.4	11,209	145.2	77.2	11,253	145.3	77.4	11,183	144.4	77.5
PFL-100W	3000K	14,693	143.2	102.6	12,913	136.4	102.6	14,693	143.2	102.6	12,913	136.4	94.7
	4000K	13,460	137.3	98.0	13,389	135.2	99.0	13,360	135.0	99.0	13,319	134.6	99.0
PFL-150W	5000K	13,684	139.6	98.0	13,615	138.8	98.1	13,649	139.2	98.1	13,649	139.2	98.1
	3000K	20,296	137.1	148.0	19,910	134.5	148.0	19,910	134.5	148.0	19,475	133.6	145.8
PFL-230W	4000K	20,160	131.8	153.0	20,151	131.1	153.7	19,931	129.8	153.6	20,162	131.4	153.4
	5000K	20,584	134.0	153.6	20,401	132.7	153.8	20,131	131.2	153.5	20,201	131.3	153.9
PFL-300W	3000K	28,752	123.2	233.3	29,253	125.2	233.6	29,319	125.7	233.3	30,197	129.4	233.3
	4000K	30,816	135.5	227.4	30,429	133.8	227.4	30,221	132.9	227.4	30,291	133.2	227.4
	5000K	30,403	133.7	227.4	30,270	133.1	227.4	30,066	132.2	227.4	29,666	130.4	227.4
PFL-400W	3000K	40,413	132.4	305.2	40,502	132.6	305.4	40,136	132.1	303.9	38,987	131.7	296.1
	4000K	39,914	137.1	291.1	39,905	137.1	291.1	39,326	135.1	291.1	39,410	135.4	291.1
	5000K	40,633	139.6	291.1	40,951	140.7	291.1	40,522	139.2	291.1	40,201	138.1	291.1
PFL-400W	3000K	51,179	126.4	404.9	50,204	124.0	404.9	50,204	124.0	404.9	48,754	120.4	405.0
	4000K	52,340	129.3	404.9	51,343	126.8	404.9	51,343	126.8	404.9	49,848	123.1	404.9
	5000K	52,340	129.3	404.9	51,343	126.8	404.9	51,343	126.8	404.9	49,848	123.1	404.9

Luminaire Mechanical Details

Specification	PFL-80	PFL-100	PFL-150	PFL-230	PFL-300	PFL-400
Ingress Protection	IP-65					
Construction	Cast Aluminum Alloy / Epoxy Powder Coat Finish / Polycarbonate Lens					
Standard Mount	Adjustable Trunnion Standard					
Mount Options	Adjustable Slip Fit / Fixed Tenon Optional					
EPA - Single Mount	1.020 Sq. Ft.	0.311 Sq. Ft.	0.311 Sq. Ft.	0.402 Sq. Ft.	0.524 Sq. Ft.	0.478 Sq. Ft.
EPA - 2@180 Deg.	2.050 Sq. Ft.	0.623 Sq. Ft.	0.623 Sq. Ft.	0.804 Sq. Ft.	1.040 Sq. Ft.	0.881 Sq. Ft.



Miami, FL USA - info@jademar.com
T: 305.640.0465 - F: 305.640.0468
WWW.JADEMAR.COM



Information contained herein is subject to change without notice.
Values are nominal. All values conform to DLC tolerances.
Revised 10/2020

Lumen Maintenance

Product Number	Test Ambient Temperature	Tested Case Temperature	L70 (Hrs)	L80 (Hrs)	L90 (Hrs)
PFL-80W	25.0C	58.2C	126,000	81,000	41,000
PFL-100W		52.5C	189,000	86,000	56,000
PFL-150W		66.8C	155,000	94,000	46,000
PFL-230W		78.0C	155,000	95,000	46,000
PFL-300W		68.6C	189,000	118,000	56,000
PFL-400W		62.7C	155,000	106,000	46,000

Product Dimensions and Weight

Model	Dimensions (L x W)	Weight (LBS)
PFL-80W	9.8" x 12.5" x 3.4"	11.64 lbs.
PFL-100W	11" x 12.7" x 3.4"	13.54 lbs.
PFL-150W	11" x 12.7" x 3.4"	13.54 lbs.
PLF-230W	14.2" x 12.7" x 3.4"	17.64 lbs.
PFL-300W	18.5" x 12.7" x 3.5"	24.25 lbs.
PFL-400W	16.9" x 27.2" x 3.2"	28.00 lbs.

Electrical Data

Product Number	Voltage (VAC)	System Amps	Power Factor	THD	System Surge Protection	System Control	LED CRI	LED Supply Current	LED Supply Voltage
PFL80W	120	0.061	0.907	16.52%	22kV Standard	1-10VDC Dimming Standard	>80	136.3mA	41.6VDC
	277	0.248	0.97	16.91%				146.3mA	42.8VDC
PFL 100W	120	0.817	0.989	15.06%				98mA	35.2VDC
	277	0.414	0.902	19.07%				116.6mA	36.1VDC
PFL 150W	120	1.290	0.995	5.55%				111.4mA	36.4VDC
	277	0.597	0.901	6.27%				74.3mA	54.0VDC
PFL 230W	120	1.880	0.996	4.55%				119.8mA	36.3VDC
	277	0.814	0.92	6.28%					
PFL 300W	120	2.540	0.997	4.38%					
	277	1.120	0.947	7.88%					
PFL 400W	120	3.370	0.998	5.88%					
	277	1.440	0.965	7.13%					

Photometry

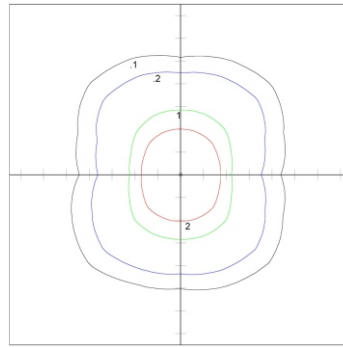
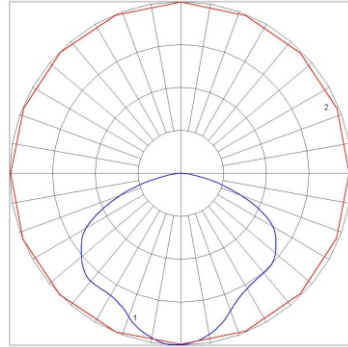
Product Number	Optic Designation	BUG Rating	Distribution Type	Beam Angle 50% (Horizontal x Vertical)	Field Angle 10 (Horizontal x Vert)
PFL-80W	T2	B3-U2-G2	Wide: NEMA 7 x 6 / IES T2S	125 x 93	161 x 161
			Wide: NEMA 7 x 7 / IES T5VS	110 x 110	168 x 165
PFL-100W	T1	B3-U0-G2	Wide: NEMA 7 x 6 / IES T1S	125 x 84	146 x 120
	T2	B3-U0-G2	Wide: NEMA 7 x 7 / IES T2S	149 x 99	166 x 144
	T3	B3-U0-G3	Wide: NEMA 7 x 7 / IES T3M	147 x 74	165 x 145
	T4	B3-U0-G3	Wide: NEMA 7 x 7 / IES T4S	113 x 118	141 x 154
PFL-150W	T1	B4-U0-G3	Wide: NEMA 7 x 6 / IES T1S	127 x 86	146 x 121
	T2	B3-U0-G2	Wide: NEMA 7 x 7 / IES T2S	147 x 92	165 x 138
	T3	B3-U0-G2	Wide: NEMA 7 x 7 / IES T3M	148 x 99	166 x 139
	T4	B3-U0-G2	Wide: NEMA 7 x 7 / IES T4S	146 x 109	166 x 146
PFL-230W	T1	B5-U0-G3	Wide: NEMA 7 x 6 / IES T1S	126 x 85	146 x 120
	T2	B4-U0-G4	Wide: NEMA 7 x 7 / IES T2S	148 x 99	166 x 141
	T3	B4-U0-G5	Wide: NEMA 7 x 7 / IES T3M	149 x 49	166 x 142
	T4	B4-U0-G4	Wide: NEMA 7 x 7 / IES T4S	122 x 126	146 x 155
PFL-300W	T1	B5-U0-G3	Wide: NEMA 7 x 6 / IES T1S	127 x 86	146 x 121
	T2	B5-U0-G5	Wide: NEMA 7 x 7 / IES T2M	159 x 94	169 x 140
	T3	B4-U0-G5	Wide: NEMA 7 x 7 / IES T3M	150 x 90	167 x 144
	T4	B4-U0-G4	Wide: NEMA 7 x 7 / IES T4M	122 x 127	146 x 155
PFL-400W	T1	B5-U0-G3	Wide: NEMA 7 x 6 / IES T1VS	111 x 85	149 x 119
	T2	B5-U0-G5	Wide: NEMA 7 x 7 / IES T2M	160 x 100	169 x 141
	T3	B5-U0-G5	Wide: NEMA 7 x 7 / IES T3M	158 x 108	168 x 145
	T4	B5-U0-G4	Wide: NEMA 6 x 7 / IES T4S	103 x 41	124 x 144



PHOTOMETRIC DETAIL

PFL - 80W

Spacing Criteria (0-180)	1.14
Spacing Criteria (90-270)	1.34
Spacing Criteria (Diagonal)	1.50

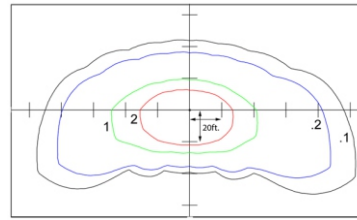
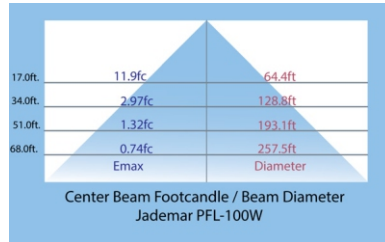


PFL 80W Illumination (Footcandle) Plot
Mounting Height = 20ft. above grade
Scale Marks: 10ft.

1. Vertical Plane at Max. Values
2. Horizontal Cone at Max. Values

PFL - 100W Type 3

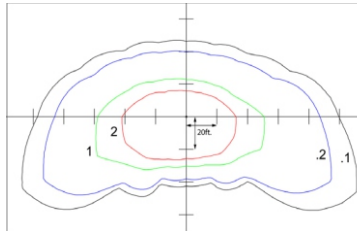
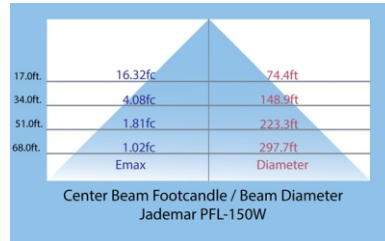
Spacing Criteria (0-180)	1.70
Spacing Criteria (90-270)	1.84
Spacing Criteria (Diagonal)	1.75



PFL-100W Type 3 Illumination Plot
Mounting Height = 20ft. above grade

PFL - 150W Type 3

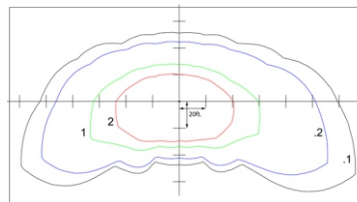
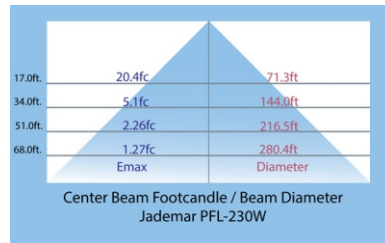
Spacing Criteria (0-180)	1.70
Spacing Criteria (90-270)	1.78
Spacing Criteria (Diagonal)	1.78



PFL-150W Type 3 Illumination Plot
Mounting Height = 20ft. above grade

PFL - 230W Type 3

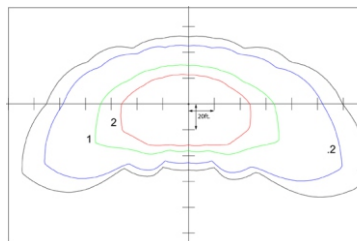
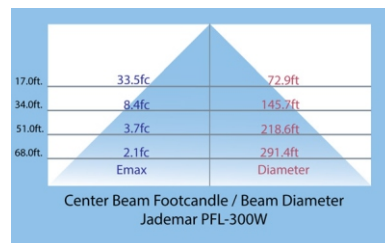
Spacing Criteria (0-180)	1.70
Spacing Criteria (90-270)	1.82
Spacing Criteria (Diagonal)	1.74



PFL-230W Type 3 Illumination Plot
Mounting Height = 20ft. above grade

PFL - 300W Type 3

Spacing Criteria (0-180)	1.72
Spacing Criteria (90-270)	1.92
Spacing Criteria (Diagonal)	1.78



PFL-300W Type 3 Illumination Plot
Mounting Height = 20ft. above grade

