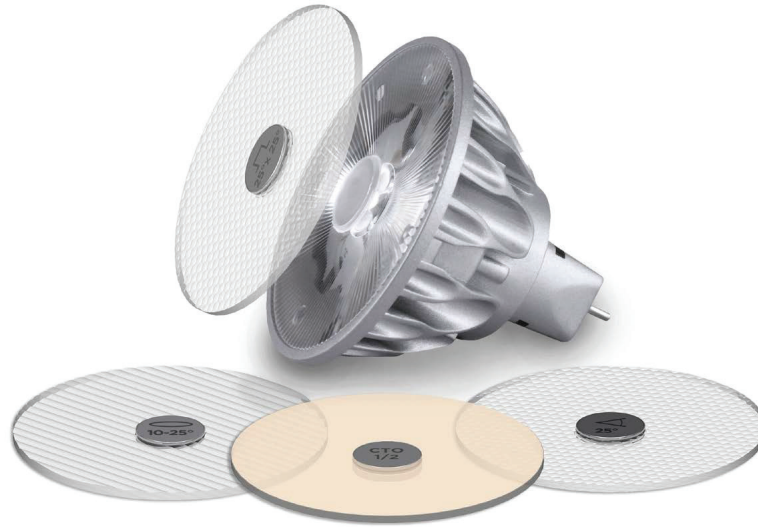


# SNAP SYSTEM ACCESSORIES

## SMALL (2")

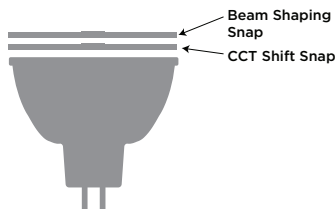


### DESCRIPTION

The award winning Soraa SNAP SYSTEM™ is the first LED lamp/accessory solution that is optimized to work as an integrated system. Based on high brightness single source GaN on GaN™ LED technology, it completely redefines accessory application. The effects that can be achieved are similar to what can be done with halogen sources, but are enabled by a relatively low operating temperature and ground-breaking optical design, materials, and methods of attachment.

### STACKING ACCESSORIES

SNAP SYSTEM accessories can be stacked in combination. For example, a beam spreader can be used in combination with CCT shifter. When combining the beam shaping Snap accessory with CCT shifting Snap Accessory, for best results always place CCT shifting Snap on the lamp first, as shown in diagram below.



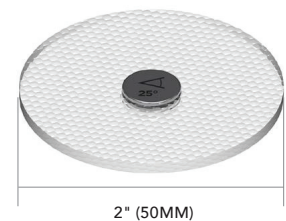
### ATTACHMENT

The SNAP SYSTEM's self-centering magnetic interconnect system makes using accessories completely user friendly. Simply attached the SNAP SYSTEM accessory directly to any Narrow Spot Soraa lamp, the magnetic force from both the accessory and lamp will securely attached to one another and center itself.

### COMPATIBILITY

The SNAP SYSTEM accessories Small (2") are compatible with the lamps and Optical Light Engines outlined below. The SNAP SYSTEM are only compatible with SORAA Narrow Spot lamps and Optical Light Engines. See each accessory data for exact diameter.

Small (2")
MR16
GU10
PAR20
OLE/C 16



### PHOTOMETRICS

IES files of accessories is available for download at [http://www.soraa.com/products/snap\\_system](http://www.soraa.com/products/snap_system)

## SORAA SNAP SYSTEM LED ACCESSORIES - SMALL (2")

### BEAM SPREADER SNAP

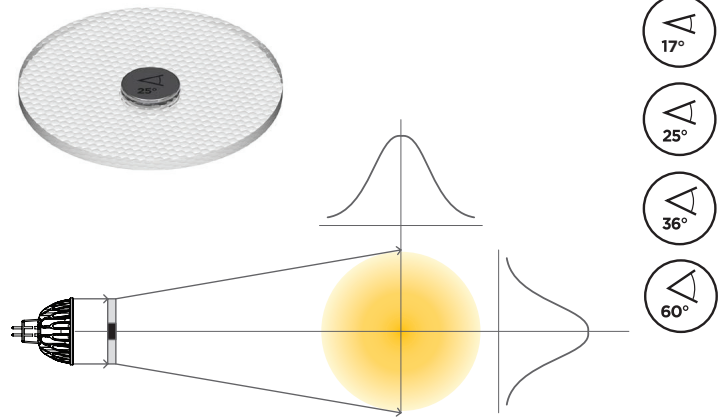
Use in any application where reducing the number of beam angle SKUs is required. Reduces inventory costs. Shortens specification, design, sales cycles. Provides maximum flexibility up to the time of installation.

Beam	Part Number	Product Code	CBCP of 10° Lamp	Field Angle
17°	AC-GC-1717-00-S1	03263	30%	33°
25°	AC-GC-2525-00-S1	00325	29%	40°
36°	AC-GC-3636-00-S1	00327	14%	55°
60°	AC-GC-6060-00-S1	00329	5%	103°

Lumen Transmissivity: 90%

Diameter: 50.0 mm Thickness: 2 mm

Magnetic Attach Force: 0.45 lb-F



### LINEAR SNAP

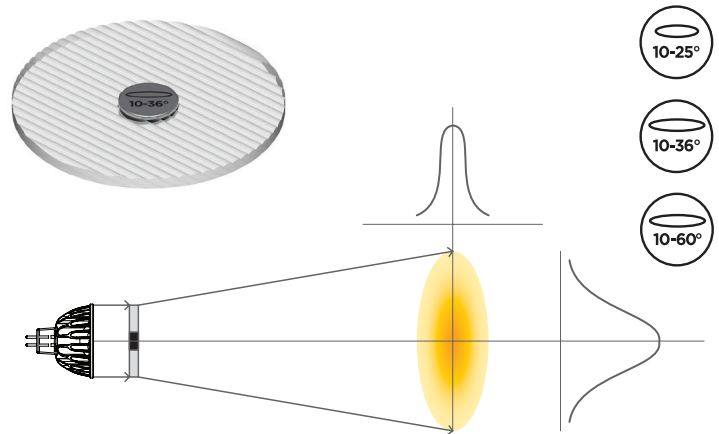
Use in wall washes and illuminating asymmetric objects. Reduces required number of light fixtures and spill illumination of target objects.

Beam	Part Number	Product Code	CBCP of 10° Lamp	Field Angle Horiz.	Field Angle Vert.
10° - 25°	AC-GE-1025-00-S1	00331	52%	27°	35°
10° - 36°	AC-GE-1036-00-S1	00333	38%	27°	43°
10° - 60°	AC-GE-1060-00-S1	03259	25%	25°	70°

Lumen Transmissivity: 90%

Diameter: 50.0 mm Thickness: 2 mm

Magnetic Attach Force: 0.45 lb-F



### FLAT TOP SNAP

Provides even illumination center to edge. Eliminates video camera saturation, for use in applications such as critical video surveillance.

Beam	Part Number	Product Code	CBCP of 10° Lamp	Field Angle Horiz.	Field Angle Vert.
25° x 25°	AC-FR-2525-00-S1	00335	19%	44°	44°
36° x 36°	AC-FR-3636-00-S1	00337	14%	46°	46°

Lumen Transmissivity: 90%

Diameter: 50.0 mm Thickness: 2 mm

Magnetic Attach Force: 0.45 lb-F

