

PRODUCT DESCRIPTION

Architectural extrusions for LED tape - dedicated to be mounted into ceilings and drywall.

Patent Number: US D724,259S



Fixture Certified to NSF 2 standards
when assembled by KLUS

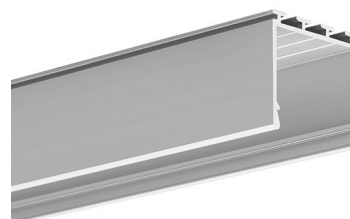


Closet Rated

- Ability to create a line of light
- Easy mounting using various techniques
- Can be combined in straight and broken linear runs
- Designed to reach an IP65 waterproof rating

FINISH :

- Silver anodized
- Black
- White



Fill empty fields

Product nr.	
Fixture type	
Company	
Job name	
Date	

TECHNICAL SPECIFICATION

Application

- surface mounted or suspended lighting fixtures

Mounting

- using surface springs,
- using suspension accessories,
- using mounting adhesive.

Additional information

- ability to construct polygonal fixtures using ZM connectors

Architectural extrusions for LED tape - dedicated to be mounted into ceilings and drywall. The height of the extrusion was designed to produce a single line of light with LEDs spaced 15 mm (0.59") apart and a frosted cover HS 22. The extrusion can accommodate two of the 10 mm (0.39") wide LED strips. Extrusion can be mounted to a surface with the use of mounting springs.

Extrusion bending

Minimum internal radius	Minimum external radius
3000 mm / 118.1"	3000 mm / 118.1"

- minimum radius - bending radius which when exceeded causes destruction, (deformation, bending or lack of compatibility with other accessories, e.g. covers, end caps, etc.) of the profile,
- internal radius - refers to the extrusion bent so that the cover is facing the inside of the arch,
- external radius - refers to the extrusion bent so that the cover is facing the outside of the arch,
- irregular curves are possible after consultation and individual quotation,
- when bending anodized extrusions, one should be aware of cracking of the anode coating (which may be more or less visible depending on the radius).

Possibility of making a linear fixture with IP64 protection, which means the fixture is dustproof and splashproof. Achieving IP64 is possible with the following covers: LIGER-22, MUN-22 and HS-22.

Turn off LED lights during peak day light hours in outdoor applications to avoid excessive heat buildup which will result in diminished LED life.

AVAILABLE LENGTHS

Ref. nr.	surface finish	available lengths
B5554ANODA_1	Silver anodized	39.4"
B5554ANODA_2	Silver anodized	78.75"
B5554ANODA_3	Silver anodized	118.11"
B5554L9010_3	White	118.11"
B5554K7_3	Black	118.11"

TECHNICAL DRAWING

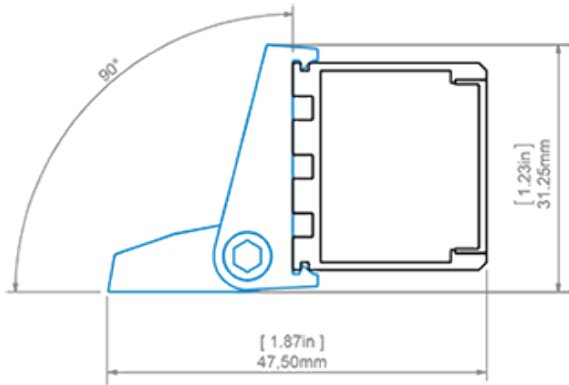


LIPOD extrusion and AM-24 mounting bracket

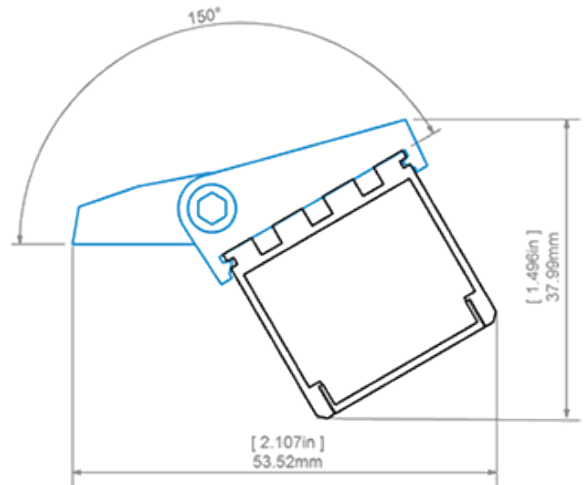


LIPOD extrusion GIP mounting bracket

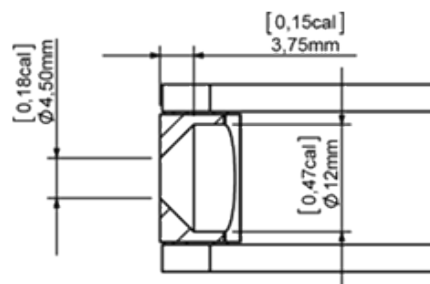
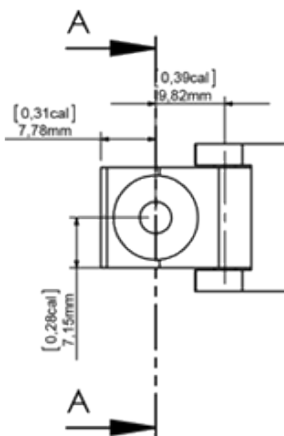
LIPOD extrusion and REGIP-UV mounting bracket



LIPOD extrusion and REGIP-UV mounting bracket

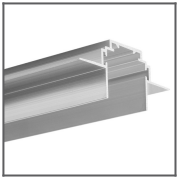


LIPOD extrusion and REGIP-UV mounting bracket

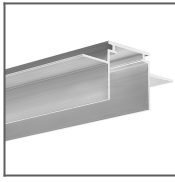


SECTION A-A

RELATED EXTRUSIONS



TEKNIK-ZM
Mounting track
Ref: C0399NA

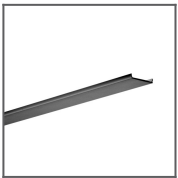


TEKUS Mounting
track
Ref: B6638V1NA

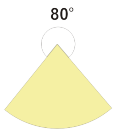
RELATED PRODUCTS

COVERS

BLACK



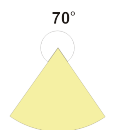
LIGER-22 Cover
black
Ref: 17044



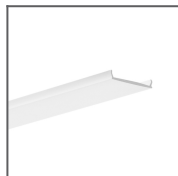
CLEAR COVERS



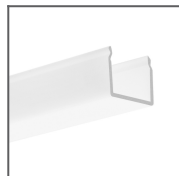
HS-22 Cover
clear
Ref: 17022



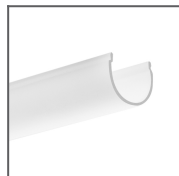
FROSTED COVERS



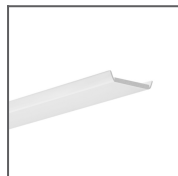
LIGER-22 Cover
frosted
Ref: 17032



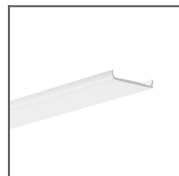
G-K Cover
frosted
Ref: 17007



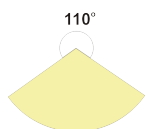
G-L Cover
frosted
Ref: 00413



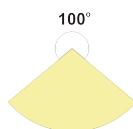
HS-22 Cover
frosted
Ref: 17011



LIGER-22 Cover
frosted
Ref: 17032V1_10

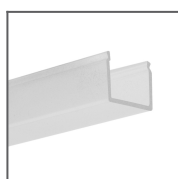


110°

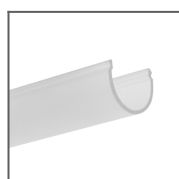


100°

SEMI-TRANSPARENT COVERS



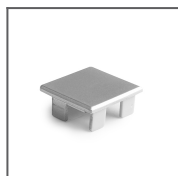
G-K Cover semi-
transparent
Ref: 00415



G-L Cover semi-
transparent
Ref: 17008

END CAPS

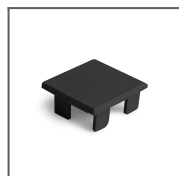
REGULAR END CAPS



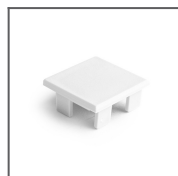
LIPOD-MET
metalized End
cap
Ref: 24051



LIPOD grey End
cap
Ref: 24004



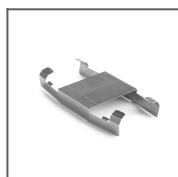
LIPOD black End
cap
Ref: 24263



LIPOD End cap
Ref: 24283

ACCESSORIES

FASTENERS & MOUNTING ACCESSORIES



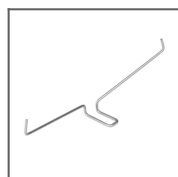
AM-24 Mounting
bracket
Ref: 24235



GIP Mounting
bracket
Ref: 24143



REGIP-UV
Adjustable
Mounting
bracket
Ref: 24271



GP Spring
Ref: 00293



BZP-ZZ Head
conductive
Ref: 42215



BZP Head
Ref: 42213



TEKNIK Clip
Ref: 24003



DP-ZZ Fastener
Ref: 00651



FI-8-LIN-ZM
Fastener black
Ref: 42285L9005



PUSZ-PRET-ZM
Fastener silver
Ref: 42276



FI-8-LIN-ZMZ
Fastener black
Ref: 42286L9005



PUSZ-LIN-ZM
Fastener silver
Ref: 42275



FI-10-ZM-W
Fastener
Ref: 42242



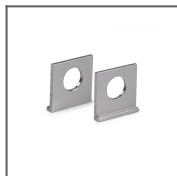
FI-10-ZM-P
Fastener
Ref: 42244



PUSZ-PRET-ZM
Fastener
Ref: 42250



PUSZ-LIN-ZM
Fastener
Ref: 42256

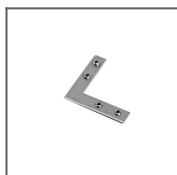


UCHO-ZM
Hanger
Ref: 42512

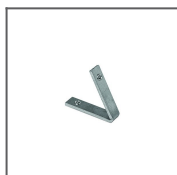
COMPONENTS FOR CONNECTING FIXTURES



ZM-NA-PION-45
Connector
Ref: 42315



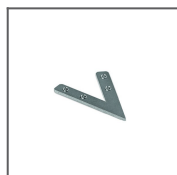
ZM-NA-90
Connector
Ref: 42723



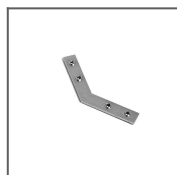
ZM-NA-PION-60
Connector
Ref: 42317



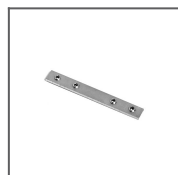
ZM-NA-PION-120
Connector
Ref: 42321



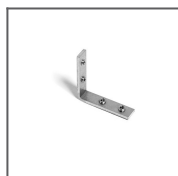
ZM-NA-45
Connector
Ref: 42339



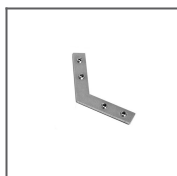
ZM-NA-135
Connector
Ref: 42725



ZM-NA-180
Connector
Ref: 42724



ZM-NA-PION-90
Connector
Ref: 42726



ZM-NA-120
Connector
Ref: 42729



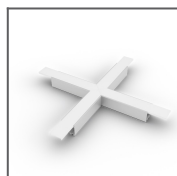
L90 Coupler
Ref: _



X135 Coupler
Ref: _



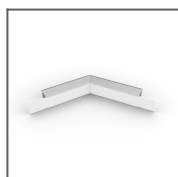
L90PZ Coupler
Ref: _



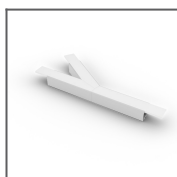
X90 Coupler
Ref: _



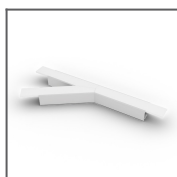
L135 Coupler
Ref: _



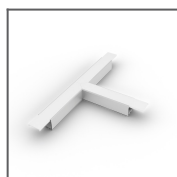
L135PW Coupler
Ref: _



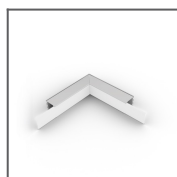
T135L Coupler
Ref: _



T135R Coupler
Ref: _



T90 Coupler
Ref: _



L90PW Coupler
Ref: _

MOUNTING SETS



RG-1 Mounting
set Silver
Ref: 42647NI



RG-1 Mounting
set Black
Ref: 42647L9005

ISOLATING BASES



Isolating bases
0,2" / 6mm
Ref: 42203



Isolating bases
0,2" / 5mm
Ref: 42204



Isolating bases
0,1" / 3mm
Ref: 42205

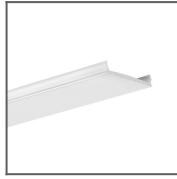
ADDITIONAL ITEMS



MP-22 Masking
cover metallized
Ref: 17167



MP-22 Masking
cover black
Ref: 17167L9005



MP-22 Masking
cover white
Ref: 17167L9010